



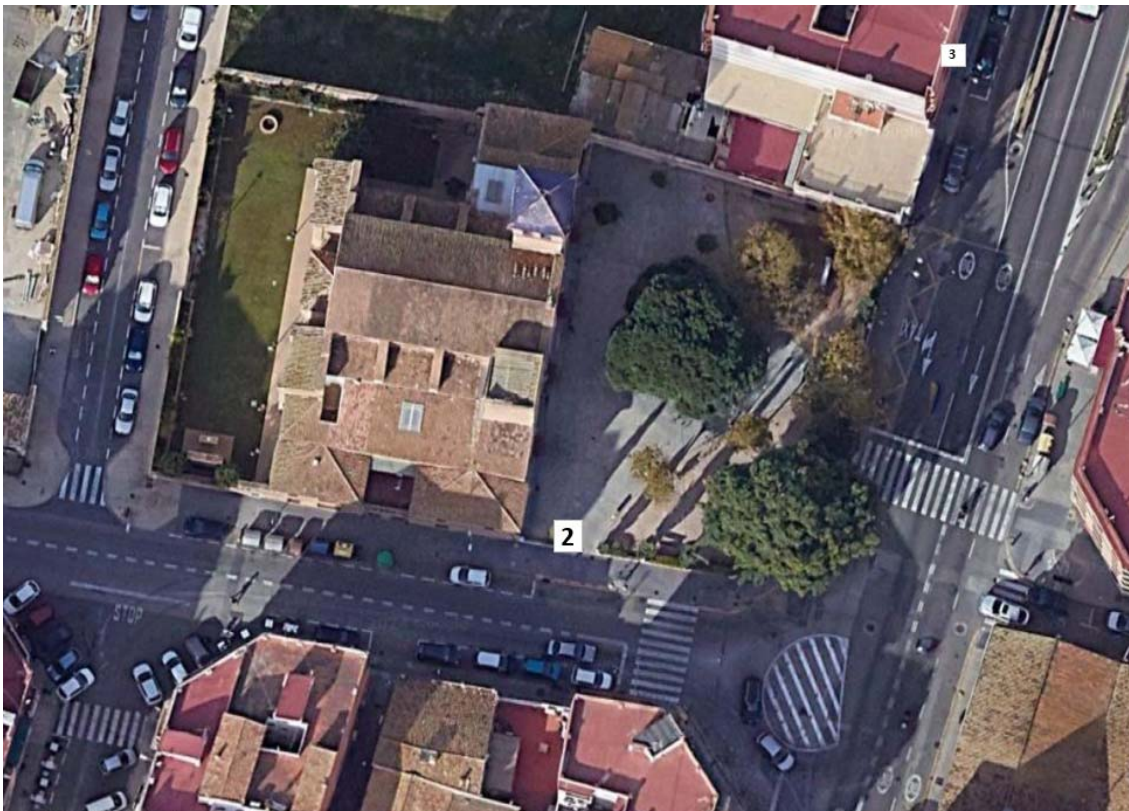
2. THE CHURCH OF OUR LADY OF GRACE

TOURIST ROUTE THROUGH SOUTHERN VILLAGES - LA TORRE-FAITANAR

GENERAL MAP OF THE ROUTE



LOCATION OF THE TOURIST ATTRACTION



HISTORY

The current parish church of La Torre, dedicated to Our Lady of Grace, began construction just after the Civil War and was consecrated in 1943. However, it lacks certain elements originally planned, notably the unfinished left tower intended to match the right tower, topped with a bell tower **(photo 1)**.

Built entirely of brick, the church's plan is divided into three naves, with the central nave higher than the two side naves; the latter contain three chapel openings each. On the Epistle side, there is veneration of Saint Anthony of Padua (with an image by Daniel Paredes) and the Crucifixion of the Lord (the Christ of shelter sculpture by Vicente Beltrán Grimal). On the Gospel side, there are images of the Sacred Heart, also by Vicente Beltrán, and a group of Mercy, by Miguel Sales.

In the sanctuary, there is veneration of the image of Our Lady of Grace, the parish's patroness, sculpted by Antonio Ballester **(photo 4)**. There is also an image of Saint Joseph and the Immaculate Conception on a processional float.

This parish church replaced the historic hermitage that existed for centuries at the beginning of Assagador de la Torre (now the intersection of Pico Calderón Street with Giménez y Costa Street), which was once the religious centre of the population. Originally dedicated to Our Lady of the Helpless and later to Our Lady of the Rosary, the hermitage continued to be a place of worship with its corresponding annual feast until it was demolished around the year 2000 to make way for a residential building.

In front of the main façade of the parish church, there is a recently renovated garden square that serves as a central gathering point for the town (photos 2 and 3). The patron saint festivities of La Torre, honoring Our Lady of Grace, take place during the second half of June in this square. The celebrations include commissions of Fallas (Valencian festivals), cycling groups, associations, and residents, coordinated by the festival committee. Highlights include a paella competition, fireworks, concerts, and the entrà de la murta followed by a procession in honor of the Virgin of Grace and Saint Joseph on the final day of the festivities.

These are not the only celebrations in La Torre's festive calendar. During the first half of June, there are festivities dedicated to Saint Anthony of Padua, linked to the hermitage that once existed at the historic Alquería del Sucre **(photo 5)**, which disappeared when the new course of the Turia River was constructed in the 1960s. These festivities traditionally followed the wheat harvest and brought together people from all nearby towns. Processions, traditional songs (cant d'albaes), and fireworks are the customary events held during this time.

According to tradition, the now disappeared hermitage of San Antonio was built to commemorate a miracle that occurred there: a girl got tangled in the mane of a "haca" (Valencian working horse) and was dragged in its stampede, but just before reaching the railway tracks and facing being hit by a train, the horse suddenly stopped right where the hermitage was later built.

Between the two June celebrations, there are festivities at the hermitage of Alquería de Alba (see itinerary 3), where traditional activities include the cant d'albaes (Valencian traditional songs), a parade from La Torre to the hermitage, and a mascletá (firecracker display).

In January, the celebrations of Sant Antoni de Porquet, held on the Sunday before the celebration day, are also significant. This event marks the first blessing of animals in the region's calendar, attracting a large crowd for this reason **(photo 6)**.



GENERAL INFORMATION

Address: Royal Road of Madrid Avenue, corner with Alba Road.

Schedule:

Monday: closed

Tuesday to Friday: 19 to 20 h

Saturday: 19 a 24 h

Sunday: 12 a 13 h

Telephone number: 963 77 24 32

ACCESSIBILITY

Parking: There are several reduced mobility parking spaces nearby, with the closest ones being at Royal Road of Madrid Avenue, number 15, and Concepción Arenal Street, number 1 access.





PHOTO 1: Parish Church of Our Lady of Grace



PHOTO 2 and 3: View of the church from the square and Royal Road of Madrid Avenue





PHOTO 4. Interior of the Church of Our Lady of Grace (photo:www.archivalencia.org)



PHOTO 5. The historic Alquería del Sucre with its hermitage, disappeared when the new course of the Turia River was built.



PHOTO 6. Adorned horses at the festival of Sant Antoni del Porquet in front of the rice mill of La Torre (photo: Facebook "Soc de La Torre")

