

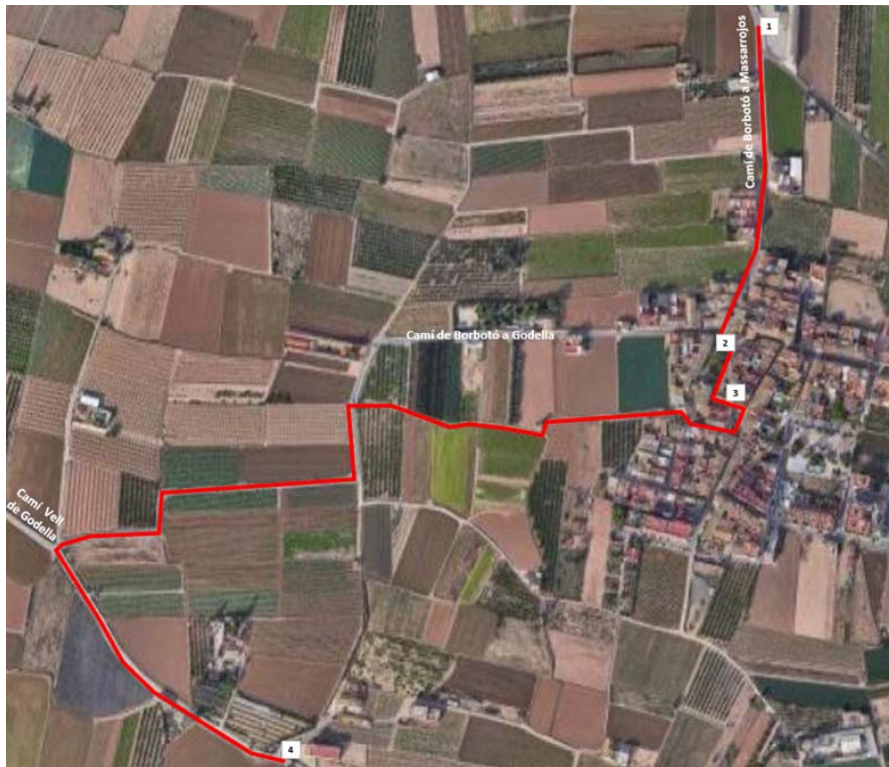


# 3. CHURCH OF SANTA ANA

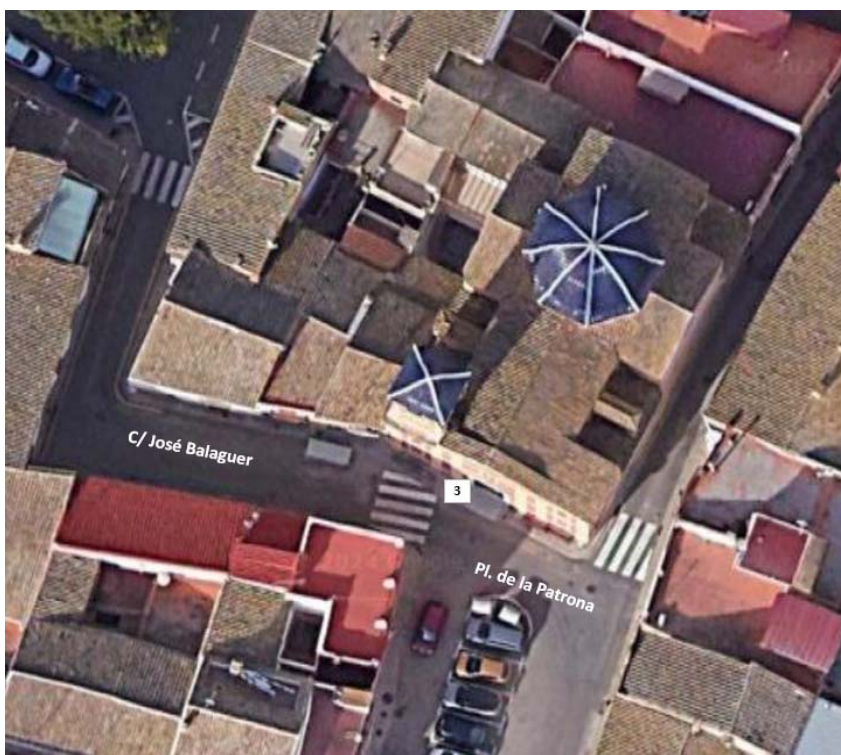
TOURIST ROUTE THROUGH NORTHERN VILLAGES - BORBOTÓ



## GENERAL MAP OF THE ROUTE



## LOCATION OF THE TOURIST ATTRACTION



## HISTORY

The construction of the Church of Santa Ana appears to date back to the late 17th century, although the current building is the work of Antoni Gilabert, a Valencian architect and director of the Royal Academy of Fine Arts of San Carlos in Valencia, in 1789.

It was not until 1942 that it gained the status of a parish church, previously under the jurisdiction of the parish of Carpesa.

The church is located in Plaza de la Patrona and has a surprisingly modern appearance for its time of conception (**photos 1, 2, and 3**).

It is a Latin cross-shaped building on a rectangular floor plan, with a single central nave and chapels between the buttresses supporting the side walls. The facade is composed of three levels with symmetrical arrangement, featuring a stone base plinth, framed openings, a rose window, and an upper stone pediment centered on the access door axis. The entrance opening consists of stone ashlar with a curved upper finish. Notable features include the upper barrel vault with lunettes and a half-dome over a drum in the transept, and the bell tower, a single-story square structure that makes it the tallest building in the town. The roof is covered with ceramic tiles, notably in blue color for the dome and bell tower.

Inside, there is a central nave with side altars and a separate communion chapel. The interior walls and vaulted ceilings are plastered with plaster according to period treatments, adorned with paintings and rich ornamentation. The floors are laid with marble tiles in a diagonal diamond pattern.

A Gothic altarpiece by the Master of Borbotó, a Valencian painter influenced by the Hispano-Flemish style of the 15th century and primarily the Italian Renaissance, is preserved in the main altar.

Regarding popular festivities, every July 26th, Borbotó celebrates the feast in honor of Santa Ana, the patron saint, with a pilgrimage to the hermitage located in the Palmaret ravine.

In September, festivities commemorate Santa Ana's intervention to divert floodwaters away from Borbotó in 1699, directing them towards the Carraixet river. These celebrations include events by different brotherhoods, including "les Filles de María y José," a youth festival with a concert; "la Mare de Déu dels Desamparats," a women's festival with costume parties; "el Crist de la Llum," a men's festival with a barbecue (torrà); and finally, the feast honoring Santa Ana, a community celebration featuring paella.

The church was declared a Local Heritage Site in 2005 under the "Borbotó Interior Reform Plan."

## GENERAL INFORMATION

**Address:** Plaza de la Patrona, 1.

**Telephone number:** 963 63 80 98

### Mass schedule:

Summer

Working days: 20:00; Holiday eves: 20:00, Holiday: 10:00.

Winter

Working days: 19:00; Holiday eves: 19:00

## ACCESSIBILITY

**Parking:** The nearest disabled parking space is located at Pl. del Moreral, 4.

**Access:** The church has a wheelchair access ramp.







**PHOTO 1.** Aerial view of the Church of Santa Ana (photo: uv.es)



**PHOTO 2.** Church of Santa Ana





**PHOTO 3.** Detail of sculpture above the main door



**PHOTO 4.** Interior of the Church of Santa Ana (photo: valenciafiestaytradicion.com)







**PHOTO 5.** Santa Ana celebration in the streets of Borbotó (photo: valenciafiestaytradicion.com)



**PHOTO 6.** Image of Santa Ana in the parish of Borbotó (photo: valenciafiestaytradicion.com)

