

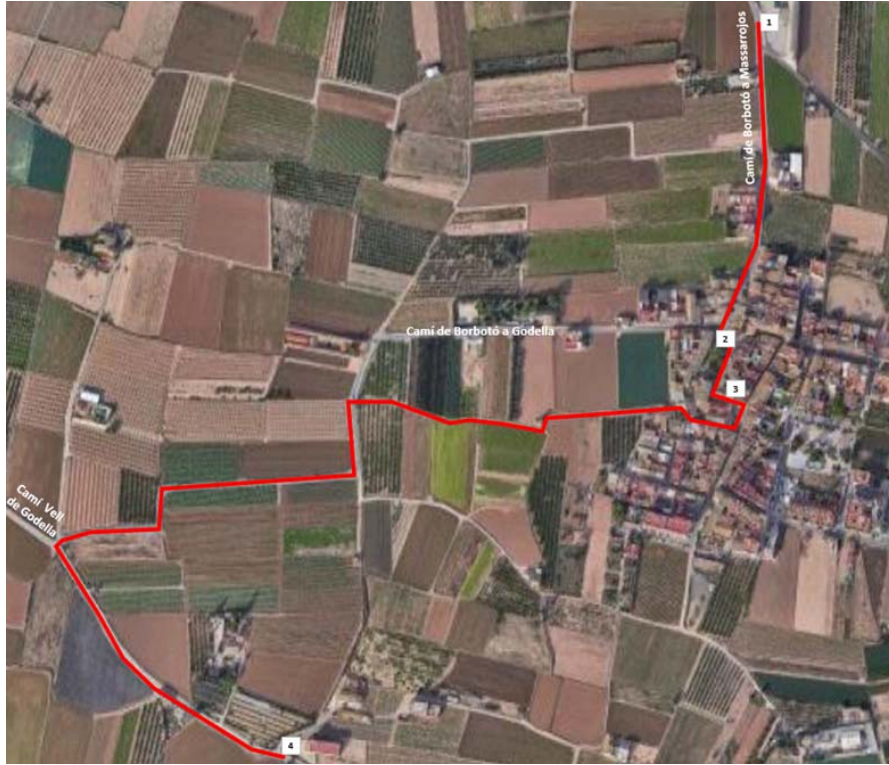


4. TONGUES OF FERRÚS-BORBOTÓ

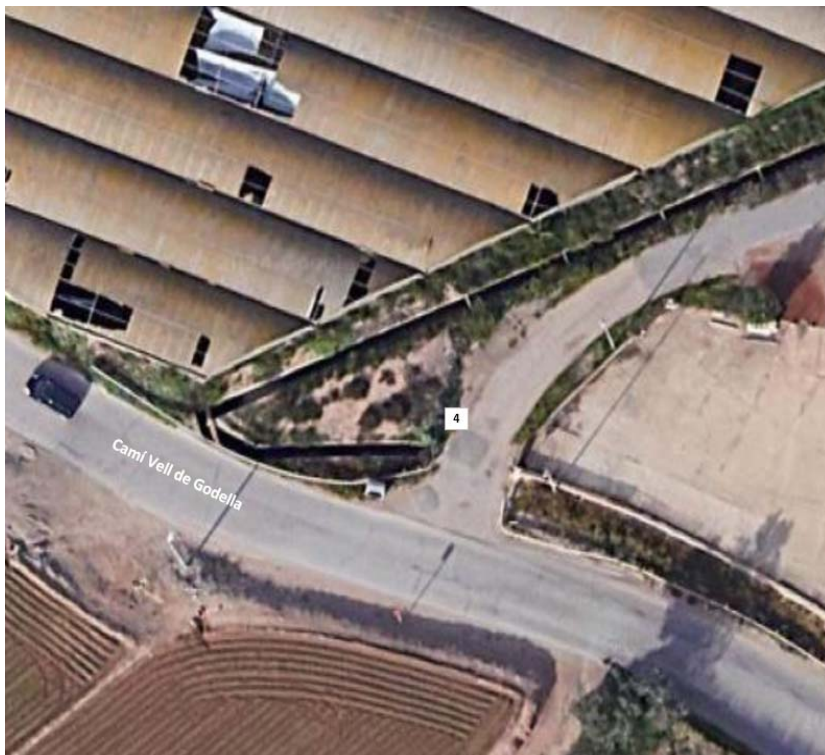
TOURIST ROUTE THROUGH NORTHERN VILLAGES - BORBOTÓ



GENERAL MAP OF THE ROUTE



LOCATION OF THE TOURIST ATTRACTION



AJUNTAMENT
DE VALÈNCIA

HISTORY

This infrastructure, known as "the tongue," consists of a stone cutwater located in the centre of the main Tormos irrigation canal, with the purpose of dividing the water into two different paths: the Ferrús branch to the right and the Borbotó branch to the left. The left branch directs water towards the town of Borbotó, while the right branch heads towards the now-vanished medieval alquería of Coscollar. Gates are installed to control the necessary water flow.

Considering its location and purpose, it is very likely that the origin of this "tongue" dates back to the same period as the irrigation canal, corresponding to the 10th-11th centuries, during the medieval Islamic era, before the Christian conquest. With the conquest by Jaime I, no changes were documented apart from the creation of the community of property owners of the Tormos irrigation canal according to the Fueros of the Kingdom of Valencia.

Various repairs and updates have altered its appearance, with the structure now being almost entirely made of concrete and lime mortar to prevent erosion, thus concealing the original ashlar. However, the structure and its operational concept have remained almost unchanged.

They were declared a Local Heritage Site in 2015 in the "Catalogue of Protected Assets and Spaces" of the General Urban Plan of the city of Valencia.

GENERAL INFORMATION

Address: Camí Vell de Godella, next to houses number 150-154.

ACCESSIBILITY

Parking: The tongues are located on a rural road, with no regular parking or disabled parking available nearby.

Access: There are no pavements; the route follows a rural path.





PHOTO 1. Aerial view of the Ferrús-Borbotó tongues.



PHOTO 2. Bifurcation of the Tormos irrigation canal known as the Ferrús-Borbotó tongues.