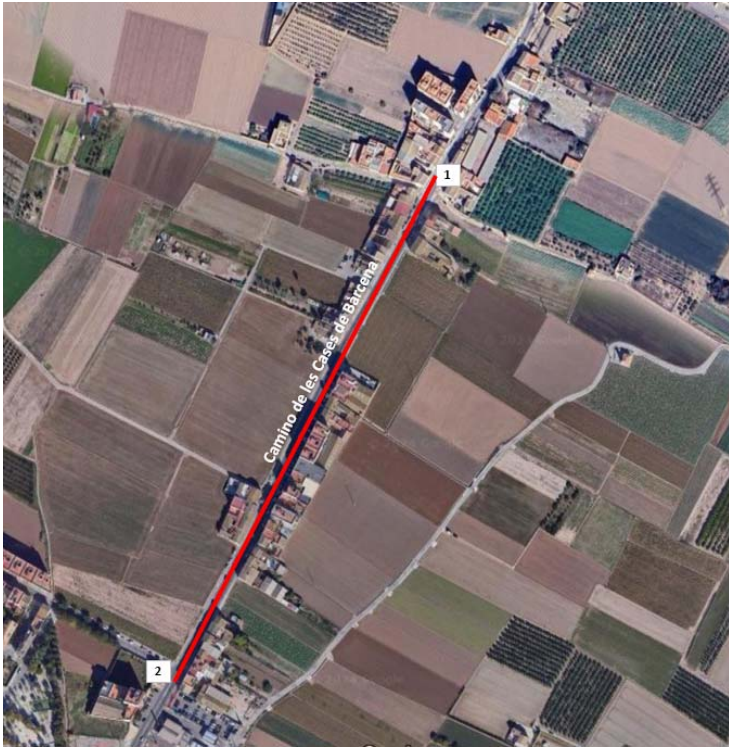




1. HISTORIC CENTRE OF CASES DE BÀRCENA

TOURIST ROUTE THROUGH NORTHERN VILLAGES - CASES DE BÀRCENA  **TURISMO DE BARRIOS**

GENERAL MAP OF THE ROUTE



LOCATION OF THE TOURIST ATTRACTION



AJUNTAMENT
DE VALÈNCIA

HISTORY

The origin of the current parish of Cases de Bàrcena seems to come from an ancient Islamic farmhouse known as Macarella or Nacarella, dating back to Jaume I's Llibre de Repartiment.

The urban core is sparsely populated and characterized by its longitudinal distribution along the Barcelona road (an old Roman road), with a row of buildings on each side (**photos 1 and 2**). This structure has always been constrained by the surrounding agricultural lands, which have been one of the main economic drivers of the population (**photo 8**). Therefore, the territorial expansion of Cases de Bàrcena has been slow and has not developed like other parishes, as no parallel or perpendicular streets to the main road have appeared, nor have new streets or squares been executed according to an urban plan, practically maintaining the original configuration.

Among its points of interest are the Placeta (**photos 3 and 4**), identified as the centre of the village, and some constructions like the old Fonda, reminiscent of the inns found along the road, which still has a ring where horses were tied up; the Barraca de Ceba, which currently functions as the clubhouse for the local falla (**photo 7**); the Hermitage of the Virgin of Pilar (see sheet 2 of this itinerary); and the building where the Town Hall is currently located (**photos 5 and 6**), which was previously a school on its upper floor and has been restored to house the municipal offices.

The historic centre of Cases de Bàrcena was declared a Site of Local Relevance in 2015 in the "Catalogue of Protected Assets and Spaces" of the General Urban Plan of the city of Valencia.

GENERAL INFORMATION:

Address:

Placeta: camí de les Cases de Bàrcena, 88 a 94

Alcaldía: camí de les Cases de Bàrcena, 63

Barraca de Ceba: camí de les Cases de Bàrcena, 77

ACCESIBILITY:

Parking: There are parking spaces for disabled persons located at Camino Casas de Bàrcena 64 and 66.





PHOTOS 1 and 2. Maps of Casas de Bàrcena from the years 1821 and 1882. Historical cartography



PHOTOS 3 and 4. Placeta of Cases de Bàrcena, identified as the center of the urban centre.





PHOTOS 5 and 6. City Hall of Cases de Bàrcena..



FOTO 7. Barraca de Ceba



FOTO 8. Rural landscape in Cases de Bàrcena