

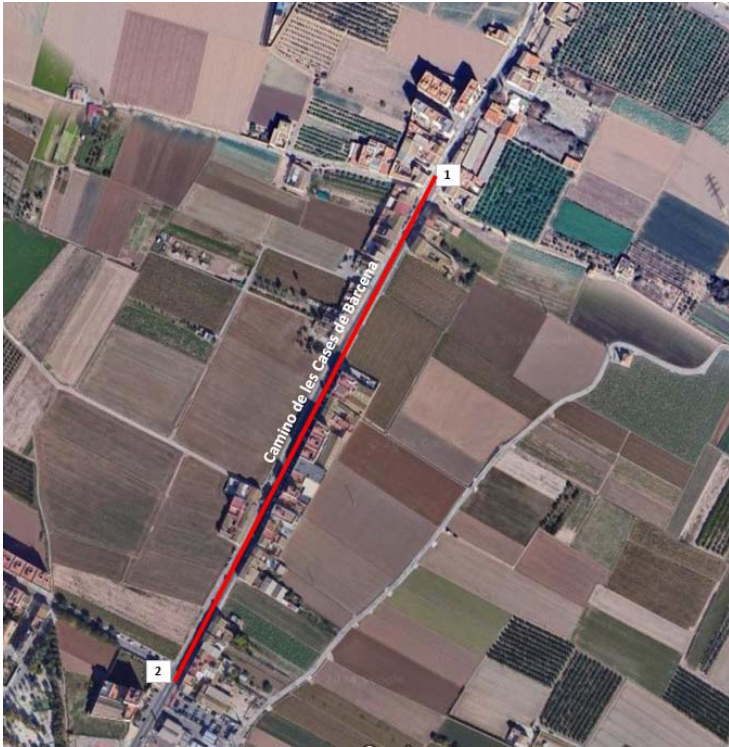


2. HERMITAGE OF THE VIRGIN OF THE PILAR

TOURIST ROUTE THROUGH NORTHERN VILLAGES- CASES DE BÀRCENA



GENERAL MAP OF THE ROUTE



LOCATION OF THE TOURIST ATTRACTION



HISTORY

According to the construction of its walls and the type of brick used, the construction date of this hermitage is placed in the late 17th century. It is located near the border of Cases de Bàrcena with Bonrepòs, ecclesiastically dependent on the parish of the latter.

The building consists of a single nave, without buttresses on the exterior, covered by a gabled roof and a bell gable. Brickwork is visible at its corners, contrasting with the rest of the hermitage which is painted white (**photos 1 and 2**). The facade features the main door, above which is a niche with the Virgin Mary. On one side, there is a ceramic plaque, and above a window, a sundial (**photo 3**).

The lateral body includes the hermitage house and the sacristy.

In front of the hermitage, notable are some stone benches next to a well with a wooden door, connected to a system of three watering troughs (**photo 4**), suggesting this was a stopping and resting area for travelers on horseback or carts.

Local festivities are held in honor of the Virgin of El Pilar and the Virgin of El Rosario. The first takes place on October 12th, featuring a procession through the streets where the image of the patroness is received by the entire population. The second occurs during Holy Week, when the image of the Virgin of El Rosario is transferred from the hermitage to the house of the Clavario Mayor and returned the next day. The festivities conclude with the "Blessing of the Cauldrons," where several cauldrons are cooked and the food shared among all residents. Originally, this custom served to distribute food among the poor who attended the celebrations and has evolved into a popular meal among all inhabitants.

The hermitage was declared a Local Heritage Site in 2015 in the "Catalogue of Protected Goods and Spaces" of the General Plan of Urban Planning of the city of València.

GENERAL INFORMATION

Address: Camino de les Cases de Bàrcena, 15.

ACCESIBILITY

Parking: There are no parking spaces for disabled persons near the location.

Access: The exterior of the hermitage is accessible via a ramp. Access to the interior is through a small step.



PHOTOS 1 and 2. Pilar Hermitage. Cases de Bàrcena.



PHOTO 3. Detail of figure, window and sundial.





PHOTO 4. Detail of the watering through next to the hermitage.

