



# 1. PRIMITIVE CORE OF POBLE NOU

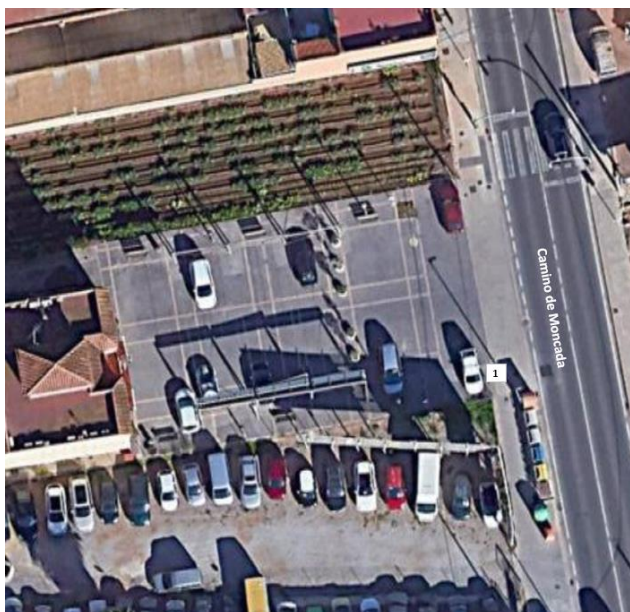
TOURIST ROUTE THROUGH NORTHERN VILLAGES – POBLE NOU

**V** TURISMO DE BARRIOS

## GENERAL MAP OF THE ROUTE



## LOCATION OF THE TOURIST ATTRACTION



AJUNTAMENT DE VALÈNCIA

## HISTORY

Within the districts located in the Poblats del Nord district, Poble Nou is the most recently created, as its name indicates ("new town" in Valencian). While there were ancient farmhouses scattered throughout the territory, some dating back to medieval times, its consolidated core dates from the 20th century, when its own distinctive personality emerged, setting it apart from nearby towns like Carpesa and Borbotó. Its urban layout is unique, with houses arranged in a longitudinal row along the Moncada road (**photos 7, 8, and 9**), surrounded by orchards and various farmhouses scattered throughout the area.

The Church of San Bernardo Mártir is located in the southern part of the town (**photos 1, 2, 3, 4, and 6**). Built by the local residents and inaugurated on October 16, 1951, by Archbishop Olaechea, it owes its name to its location on the plain known as Llano de San Bernardo (which itself derives from the ancient monastery of Sant Bernat de Rascanya). The church was strategically placed to serve as centrally as possible for the houses and farmhouses of that era. It consists of two parts: the main temple with its annexes, and a simple bell gable. The structure features a single rectangular nave with a pointed barrel vault.

Before the construction of this church, the place of worship for the residents of Poble Nou was the Hermitage of El Pi (named after the pine tree), dedicated to Santa Ana. The origins of this hermitage seem to trace back to Marqués de Valldaura, Don Vicente Castillo, and it was initially located in the El Pi farmhouse before being moved to its current and final location. Initially under the jurisdiction of the parish of Benicalap, it achieved the status of an independent parish in 1942. The cult of San Bernardo Mártir was added in 1946, alongside the original images of Santa Ana and Cristo de la Aurora. The limited space of the Hermitage of El Pi prompted a neighborhood association, led by Francisco Roig "el porcater," to organize the construction of the church. The Roig family (owners of the biggest supermarket chain in Spain, as well as other projects) actively contributed to the restoration of the temple in 2007 (**photo 5**). The Roig family continues to maintain a strong connection with the community, notably through Yeguada Roig, a riding school located along the Moncada road, offering horse riding lessons, horseback riding, and boarding services for horses.

The patron saint festivals in honor of San Bernardo Mártir take place at the beginning of September, featuring various activities such as giant paellas, performances, and fireworks. The central event is the procession where residents, associations, and different entities parade the image of San Bernardo.

## GENERAL INFORMATION

**Address:** Church of San Bernardo Mártir: Camino de Moncada, 188

## ACCESSIBILITY

**Parking:** There is a reduced mobility parking space on Camino de Moncada, 219.

**Access:** Route with narrow sidewalks or absence of sidewalks to the church, with lowered pedestrian crossings. Access to the interior of the church involves a small step.





**PHOTO 1.** Church of San Bernardo, south of Poble Nou



**PHOTO 2.** Detail of the door of the Church of San Bernardo



**PHOTO 3 and 4.** Fountain next to the church, dedicated to parents ("Als pares, font de tot": to parents, source of everything)







**FOTO 5.** Monument dedicated to the Roig Alfonso family for their collaboration in the construction of the parish



**PHOTO 6.** Interior of the Church of San Bernardo (photo: [www.sanbernardoalzira.es](http://www.sanbernardoalzira.es))



**PHOTO 7.** Fountain next to the Camino de Moncada







PHOTO 8 and 9. Traditional Valencian style houses

